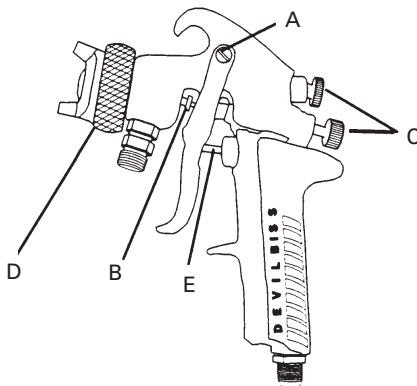


SPRAY GUN LUBRICATION

Daily, apply a drop of SSL-10* spray gun lube at trigger bearing stud (28) and the stem of air valve (20) where it enters air valve assembly. The shank of fluid needle (11) where it enters packing nut (9) should also be oiled. Fluid needle packing (8) should be lubricated periodically. Make sure baffle (6) and retaining ring (3) threads are clean and free of foreign matter. Before assembling retaining ring to baffle, clean the threads thoroughly, then add two drops of SSL-10 spray gun lube to threads. Fluid needle spring (14) and air valve spring (19) should be coated with a very light grease, making sure that any excess grease will not clog the air passages. For best results, lubricate the points indicated, daily.

* Not for air tools or high RPM equipment.

- A. Trigger Points
- B. Packing
- C. Adjusting Knobs
- D. Baffle Threads
- E. Air Valve Cartridge



PARTS REPLACEMENT

FLUID INLET GASKET (32) REPLACEMENT INSTRUCTIONS

1. Remove fluid inlet adapter (34) with appropriate wrench.
2. Clean Loctite from gun body inlet threads and seal area.
3. Place gasket (32) squarely onto the fluid inlet adapter and push it down until it is flat against the shoulder.
4. Use medium strength thread sealant (i.e. Devcon 2242 blue, or equal) on threads before installing fluid inlet adapter.
5. Torque fluid inlet adapter to 20-25 ft. lbs. and tighten locknut.

PARTS REPLACEMENT

Figure 1 Air Cap

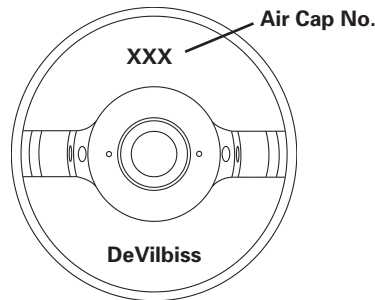


Chart 1

| Air Caps, Air Flows and Applications | | | | | | |
|--------------------------------------|--------------------------------|---|----------------|---------|---------|---------|
| No. on Air Cap Order | Air Cap With Ring (Ref. No. 4) | Type of Fluid Delivery S= Suction P= Pressure | Air Flow (CFM) | | | |
| | | | @30 psi | @40 psi | @50 psi | @60 psi |
| 410 | AV-440-410 | S,P | 9 | 11 | 13 | 19 |
| 414 | AV-440-414 | P | | 14 | 16.5 | 19 |

Chart 2

| Fluid Tips and Needles | | | | |
|------------------------|-----|----------------|---------------------------------|----------------------------------|
| Tip Size | | Fluid Tip (#5) | Suction Feed Fluid Needle (#11) | Pressure Feed Fluid Needle (#11) |
| In. | mm | | | |
| 0.039 | 1.0 | AV-213-10 | NR | GTI-449-12 |
| 0.047 | 1.2 | AV-213-12 | NR | GTI-449-12 |
| 0.055 | 1.4 | AV-213-14 | GTI-413 | GTI-449-12 |
| 0.063 | 1.6 | AV-213-16 | GTI-413 | NR |
| 0.070 | 1.8 | AV-213-18 | GTI-413 | NR |

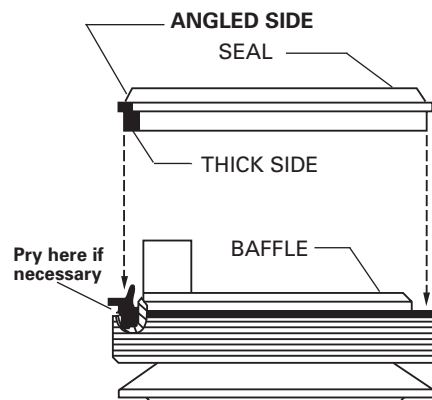
NR = Not Recommended

GTI-33 Baffle Seal Replacement

1. Remove Fluid Tip (5).
2. Remove Baffle (6).
3. Remove Seal (7) from baffle.

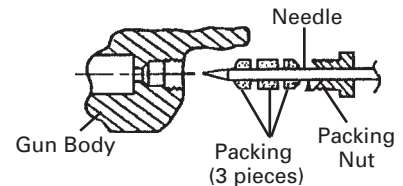
NOTE

The seal is designed to be a tight fit on the baffle. The seal should be able to be removed using your fingers. If you are unable to remove the seal using your fingers, insert a small screwdriver between the outer lip and the back of the baffle and pry the seal off.

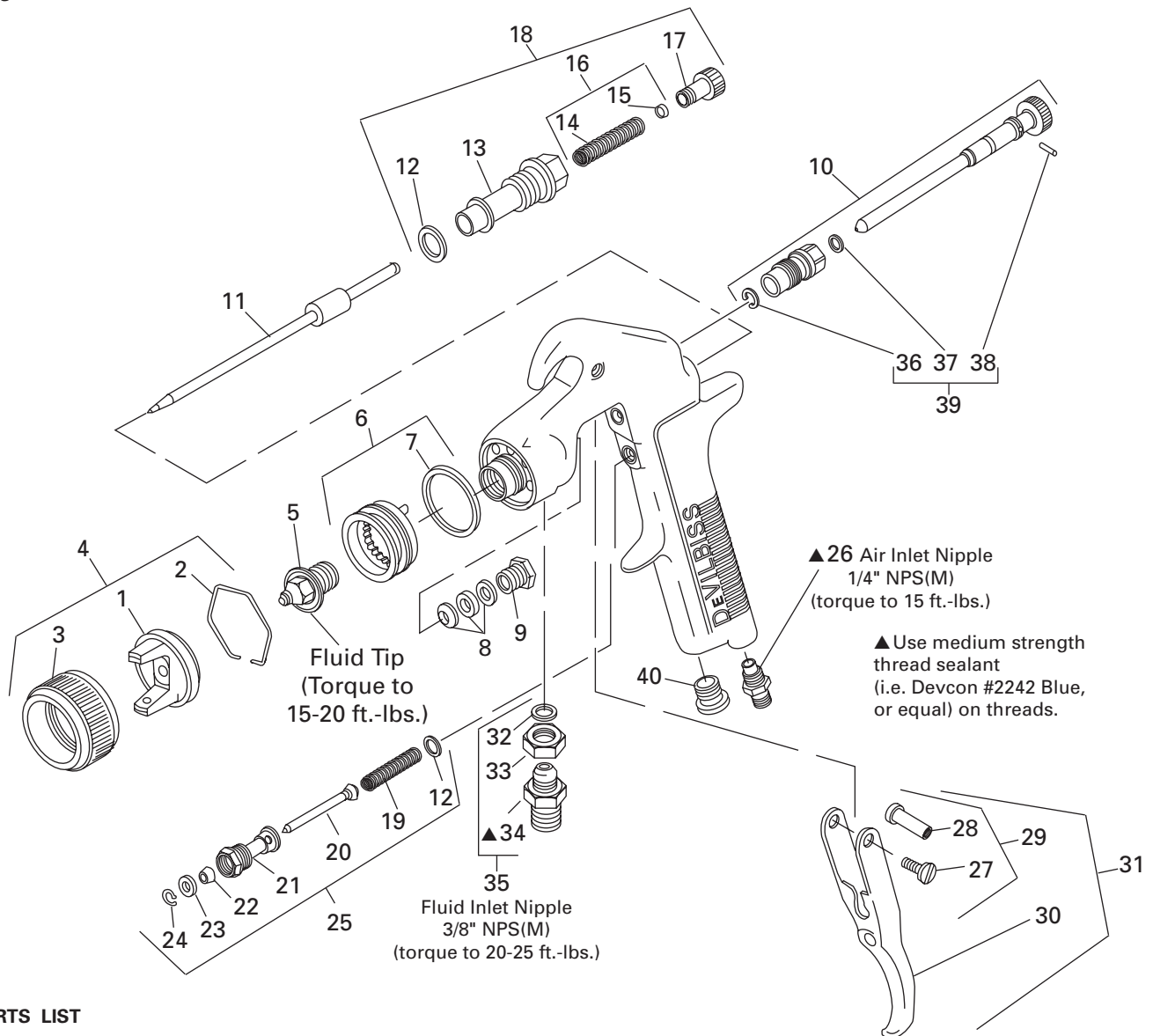


4. Assemble seal to baffle with angled side up as shown in diagram. **NOTE:** The seal should be a tight fit on the baffle. If it is a loose fit on the baffle, assure that it is assembled with the angled side up.
5. Install baffle on gun.
6. Install fluid tip (5) and tighten to 15-20 ft-lbs.

JGA-4035 Packing Replacement Instructions



1. Remove adjusting knob and needle spring from gun.
2. Partially withdraw needle from gun body.
3. Loosen packing nut and remove.
4. Remove old packing.
5. Assemble packing nut to needle.
6. Assemble packing in order shown to needle.
7. Insert needle all the way into gun body seating in tip.
8. Install needle spring and adjusting knob.
9. Thread packing nut into gun body.
10. Tighten packing nut in equal increments - no more than 1/6 turn at a time.
11. After each adjustment, pull needle open and observe needle closure.
12. If needle snaps shut, continue adjusting nut until there is evidence of needle bind or slow closing.
13. Back off packing nut 1/12 turn to the point where needle snaps shut. Packing nut must remain tight enough to prevent loosening by hand.
14. Pull needle several times to verify needle snaps shut and check packing nut for looseness.



PARTS LIST

| Ref. No. | Replacement Part No. | Description | Ind. Parts Req. | Ref. No. | Replacement Part No. | Description | Ind. Parts Req. |
|----------|----------------------|--------------------------------------|-----------------|----------|----------------------|---------------------------------|-----------------|
| 1 | --- | Air Cap | 1 | •20 | --- | Air Valve | 1 |
| 2 | JGA-156-K10 | Spring Clip (Kit of 10) | 1 | 21 | --- | Air Valve Body | 1 |
| 3 | GTI-3 | Air Cap Retaining Ring | 1 | •22 | --- | U-Cup Seal | 1 |
| 4 | See Chart 1 | Air Cap & Retaining Ring | 1 | •23 | --- | Washer | 1 |
| 5 | See Chart 2 | Fluid Tip | 1 | •24 | --- | Snap Ring | 1 |
| 6 | GTI-425 | Baffle Assembly | 1 | 25 | JGS-449-1 | Air Valve Assembly | 1 |
| •7 | GTI-33-K5 | Baffle Seal (Kit of 5) | 1 | 26 | P-MB-51 | Air Inlet Nipple 1/4" NPS(M) | 1 |
| •8 | JGA-4035-K5 | Packing (Kit of 5) | 1 | 27 | --- | Trigger Stud Screw | 1 |
| 9 | 34411-122-K10 | Packing Nut (Kit of 10) | 1 | 28 | --- | Trigger Stud | 1 |
| 10 | GTI-405 | Spreader Valve | 1 | 29 | JGS-478 | Stud and Screw Kit | 1 |
| 11 | See Chart 2 | Fluid Needle | 1 | 30 | --- | Trigger | 1 |
| •12 | JGS-72-K10 | Gasket Kit (PTFE) (Kit of 10) | 2 | 31 | JGS-477-1 | Trigger Stud, Screw Kit | 1 |
| 13 | --- | Body Bushing | 1 | •32 | --- | Fluid Inlet Gasket (PTFE) | 1 |
| •14 | --- | Fluid Needle Spring | 1 | 33 | --- | Locknut | 1 |
| •15 | --- | Spring Pad | 1 | 34 | --- | Fluid Inlet Adapter | 1 |
| 16 | MBD-19-K10 | Spring and Pad (Kit of 10) | 1 | 35 | JGA-4042 | Fluid Inlet, Gasket, Nut Kit | 1 |
| 17 | GTI-414 | Needle Adjusting Screw | 1 | •36 | --- | Retaining Clip | 1 |
| 18 | KK-5059 | Bushing, Spring, Pad and Knob Kit | 1 | •37 | --- | Seal | 1 |
| •19 | --- | Air Valve Spring | 1 | •38 | --- | Pin | 1 |
| | | | | 39 | GTI-428-K5 | Clip, Seal & Pin Kit (5 each) | 1 |
| | | | | 40 | --- | Plug | 1 |

• KK-5058-2 Gun Repair Kit includes a quantity of necessary parts.