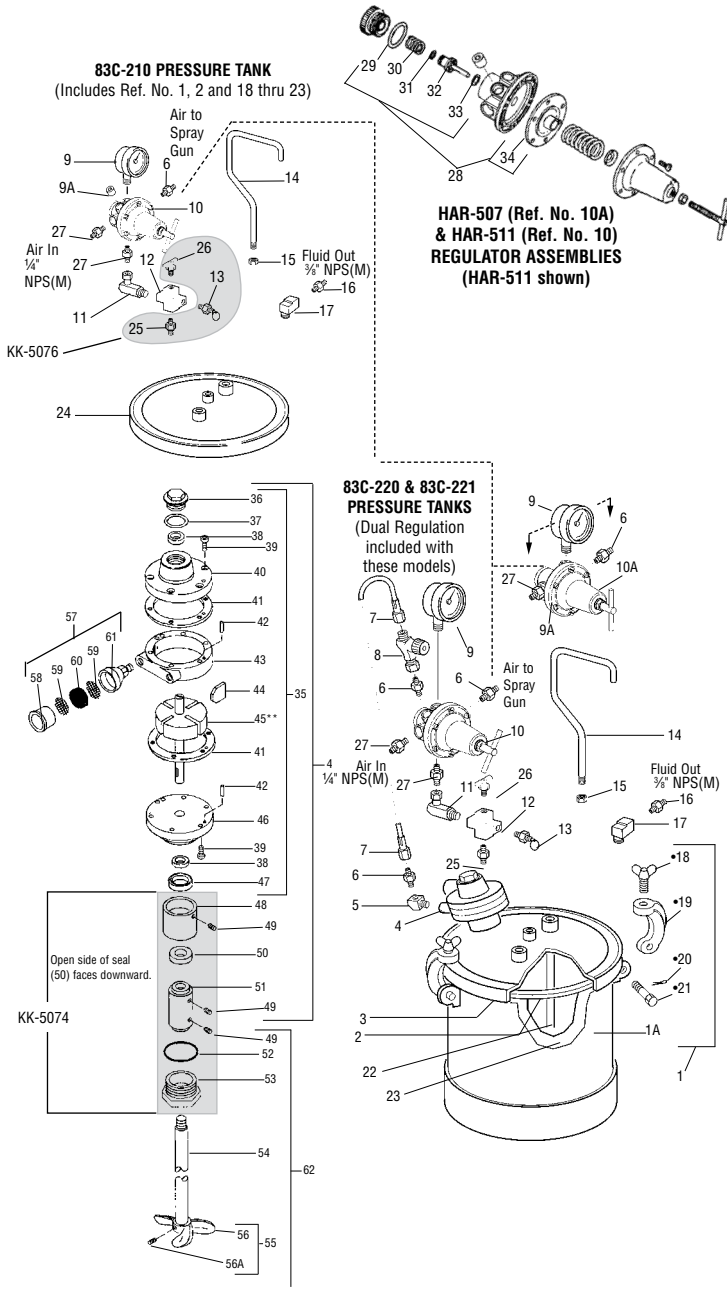




PT II™ A.S.M.E. Code Pressure Tanks PARTS AND ASSEMBLY

Refer to Part Sheet: SBBI-21-044



- * Parts included in KK-5057 Kit (1 ea. of #'s 18, 19, 20 & 21).
- Parts included in PT-410 Air Motor Assembly.
- † Parts included in KK-5001-1 Air Motor Repair Kit.
- ◆ Parts included in KK-5006 Strainer Screen & Felt Kit (2 ea. of #59, 4 ea. of #60).
- ★ Parts included in KK-5076 Kit (1 ea. of #'s 13, 25 & 26).
- Parts included in KK-5074 Kit (1 ea. of #'s 49, 50, 51, 52 & 53).

Suffixes: -K designates kits of multiple parts. Example: SSG-8096-K5 is a kit of 5 O-Rings.

| Ref. No. | Order No. | Model No. | Description | Parts Req. |
|----------|------------------|-------------|---|------------|
| 1 | — | — | Tank Assy. Kit (Includes #'s 1A, 18, 19, 20 & 21) | 1 |
| 1A | — | — | Tank Shell | 1 |
| 2 | 192070 | PT-33-1 | Lid Gasket, Santoprene | 1 |
| 3 | — | — | Lid, Zinc Plated (Agitator) | 1 |
| 4 | — | — | Air Motor/Adapter Assy. (#'s 35, 48, 49, 50 & 51) | 1 |
| 5 | Purchase locally | — | Street Elbow 1/4" NPT (F) x 1/4" NPT (M) | 1 |
| 6 | 240006 | H-2008 | Nipple 1/4" NPT (M) (83C-210 & 83C-220) x 1/4" NPS (M) (83C-211 & 83C-221) | 2 |
| 3 | — | JGA-4035-K5 | Packing (Kit of 5) | 1 |
| 7 | — | — | Hose Assembly | 1 |
| 8 | 180005 | HAV-500 | Air Adjusting Valve 1/4" NPS (F) x 1/4" NPT (M) | 1 |
| 9 | 901540 | 83-2727 | Gauge (83C-210 & 83C-220) Gauge (83C-211 & 83C-221) | 1 2 |
| 9A | Purchase locally | — | Pipe Plug 1/4" NPT(M) (Supplied/Regulator) | 1 |
| 10 | 192242 | HAR-511 | Regulator (All regulated models) | 1 |
| 10A | 130059 | HAR-507 | Regulator (83C-211 & 83C-221) | 1 |
| 11 | 190360 | SSP-30-ZN | 90° Swivel Adapter 1/4" NPS (F) x 1/4" NPT (M) | 1 |
| 12 | Purchase locally | — | Cross 1/4" NPT (F) | 1 |
| ★13 | — | — | Safety Valve, 80 PSI | 1 |
| 14 | 190290 | PT-32 | Handle | 1 |
| 15 | Purchase locally | — | Hex Nut 3/8" -16 | 1 |
| 16 | 240000 | AD-11 | Nipple 3/8" NPT (M) x 3/8" NPT (M), S.S. | 1 |
| 17 | Purchase locally | — | Street Elbow 3/8" NPT (F) x 3/8" NPT (M), S.S. | 1 |
| *18 | — | — | Thumb Screw | 4 |
| *19 | — | — | Yoke Assembly | 4 |
| *20 | — | — | Cotter Pin, 3/32 x 1" | 4 |
| *21 | — | — | Hinge Pin | 4 |
| 22 | 190289 | PT-31 | Fluid Tube | 1 |
| 23 | 192153 | PT-52 | Tank Liner | |
| 24 | — | — | Lid, Zinc Plated | 1 |
| ★25 | — | — | Hex Nipple 1/4" NPT (M) | 1 |
| ★26 | — | — | Drain Valve | 1 |
| 27 | 901552 | 83-4233 | D.M. Nipple (Universal Pipe Thread) (83C-210 & 83C-211) (83C-220 & 83C-221) | 2 3 |
| 28 | 191554 | KK-4977 | Repair Kit | 1 |
| 29 | — | — | O-Ring | 1 |
| 30 | — | — | Spring | 1 |
| 31 | — | — | O-Ring | 1 |
| 32 | — | — | Valve | 1 |
| 33 | — | — | O-Ring | 1 |
| 34 | — | — | Diaphragm Assembly | 1 |
| 35 | 190301 | PT-410 | Air Motor Assembly | 1 |
| 36 | — | — | End Cap | 1 |
| †37 | — | — | End Cap Gasket | 1 |
| 38 | 190313 | PT-58 | Bearing | 2 |
| 39 | Purchase locally | — | Screw (1/4" -28 x 1/2") | 12 |
| ●40 | — | — | Front Plate | 1 |
| †41 | — | — | End Plate Spacer | 2 |
| 42 | — | — | Dowel Pin | 4 |
| ●43 | — | — | Body | 1 |
| †44 | — | — | Vane | 4 |
| 45 | — | — | Rotor Assembly | 1 |
| ●46 | — | — | End Plate | 1 |
| 47 | 190311 | PT-56 | Shaft Seal | 1 |
| 48 | — | — | Air Motor Adapter | 1 |
| ■49 | Purchase locally | — | Set Screw (1/4" -20 x 1/4") | 4 |
| ■50 | 190292 | KK-5041 | Seal Assembly | 1 |
| ■51 | — | — | Shaft Coupling | 1 |
| ■52 | 190354 | SSG-8096-K5 | O-Ring (Kit of 5) | 1 |
| ■53 | — | — | Adapter Nut | 1 |
| 54 | — | — | Shaft | 1 |
| 55 | — | — | Propeller Assembly | 1 |
| 56 | — | — | Propeller | 1 |
| 56A | Purchase locally | — | Set Screw (1/4" -20 x 3/8" S.S.) | 1 |
| 57 | — | — | Muffler Assembly | 1 |
| 58 | See 57 | — | Body | 1 |
| ◆59 | See 57 | — | Screen | 2 |
| †60 | See 57 | — | Felt | 1 |
| 61 | See 57 | — | Cap | 1 |
| 62 | 192271 | KK-5075 | Agitator Shaft Assy. (Optional-Order Separately) | 1 |