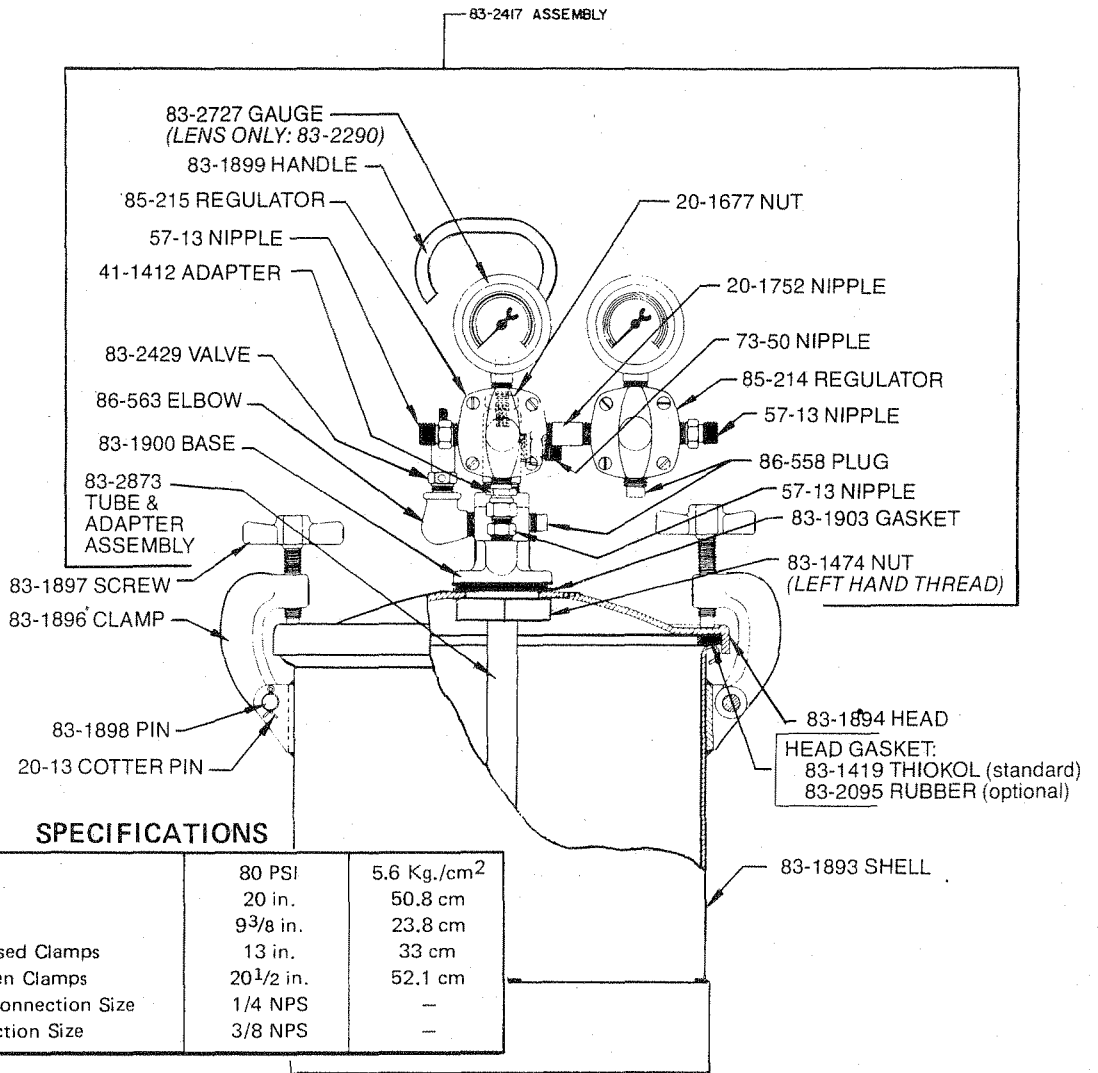


**Binks MODEL 83-5668**  
**TWO-GALLON NON-A.S.M.E. PRESSURE FLUID TANK**  
**ZINC COATED, WITH TWO REGULATORS**



**PARTS LIST**

PART NO.	DESCRIPTION	QTY.	PART NO.	DESCRIPTION	QTY.
20-13	COTTER PIN, 3/32 Dia. x 3/4	4	83-1899	HANDLE	1
20-1677	5/16-18 HEX. NUT	1	83-1900	BASE	1
20-1752	SHORT NIPPLE, 1/4 NPT	1	83-1903	GASKET	1
41-1412	SWIVEL ADAPTER	1	83-2095*	HEAD GASKET (Rubber)	1
57-13	D.M. NIPPLE	3	83-2290	GAUGE LENS (Glass)	2
73-50	D.M. NIPPLE	1	83-2417	CONTROL UNIT	1
83-1419	HEAD GASKET (Thiokol)	1	83-2429	SAFETY VALVE, 80 PSI	1
83-1474	LOCK NUT	1	83-2727	GAUGE, 100 PSI	2
83-1893	SHELL (Zinc coated)	1	83-2873	TUBE & ADAPTER ASS'Y	1
83-1894	HEAD (Zinc coated)	1	85-214	AIR REGULATOR	1
83-1896	"C" CLAMP	4	85-215	AIR REGULATOR	1
83-1897	CLAMP SCREW	4	86-558	PIPE PLUG	1
83-1898	PIN	4	86-563	STREET ELBOW	1

\*Optional. Please order separately.



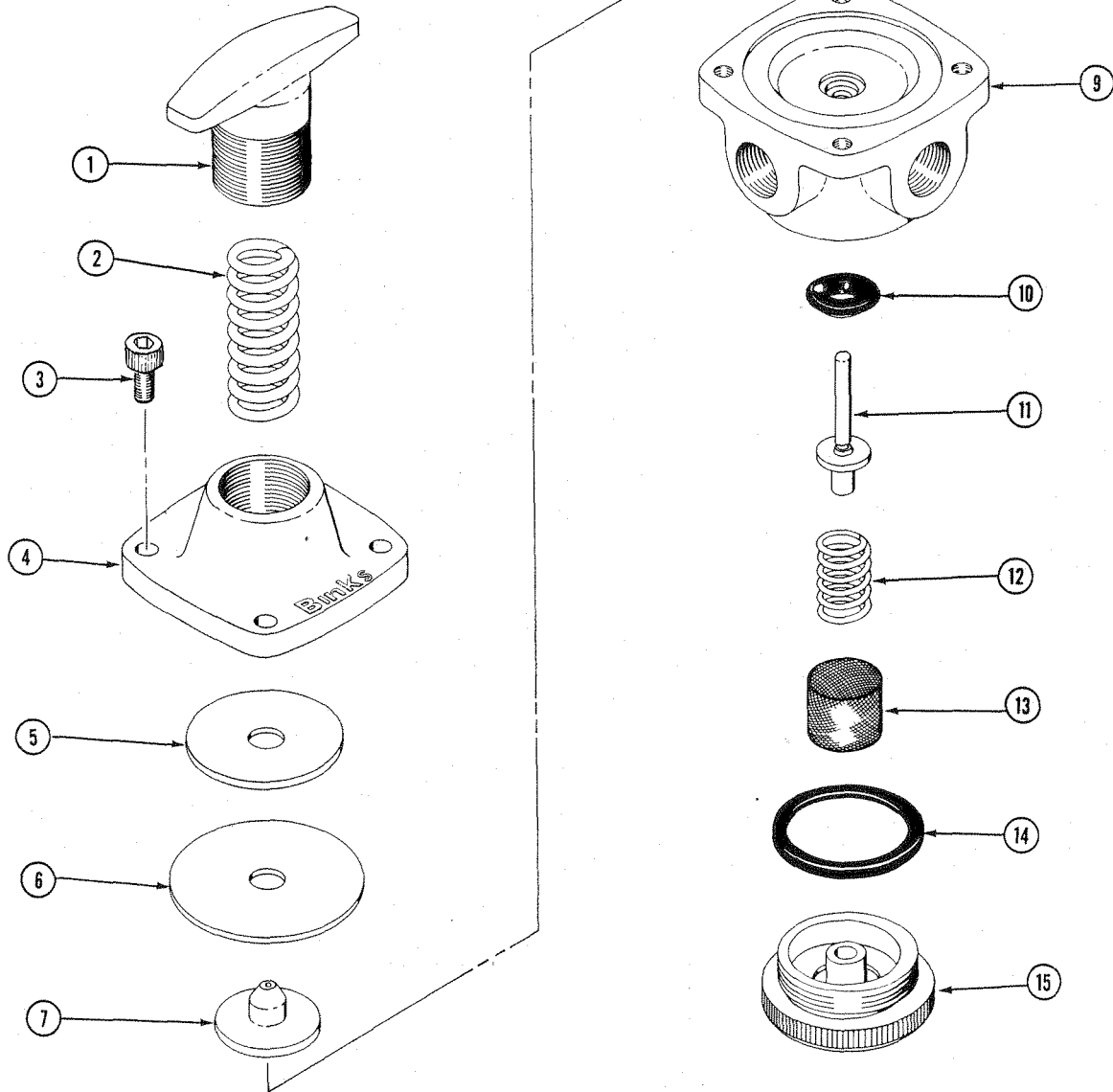
1-800-99-BINKS

Replaces  
Part Sheet  
1458R-5

Part Sheet  
1458R-6

# Binks MODEL 85-214 & 85-215 AIR PRESSURE REGULATORS

Flow Coefficient (C<sub>v</sub>) .60 Maximum



## PARTS LIST

(When ordering, please specify PART NO.)

ITEM NO.	PART NO.	DESCRIPTION	QTY.	ITEM NO.	PART NO.	DESCRIPTION	QTY.
1	85-192	KNOB .....	1	9	85-301●	BODY (for Model 85-214) .....	1
2	85-305	SPRING .....	1		85-303●	BODY (for Model 85-215) .....	1
3	20-3635	SCREW, NO. 10-24 x 1/2 SOCKET HD. SCR. ....	4	10	85-341■	SEAT (Buna-N, Standard) .....	1
4	85-304	BONNET .....	1	11	86-916	SEAT (Polyethylene, Opt.) .....	1
5	85-193	DISC .....	1	12	85-309	VALVE .....	1
6	85-306■	DIAPHRAGM .....	1	13	85-196■	SPRING .....	1
7	85-194	SEAT .....	1	14	85-310■	SCREEN .....	1
8	20-2227■	"O" RING .....	1	15	20-4407■	SEAL .....	1
					85-336	CAP .....	1

■ Also available in Repair Kit 6-207. Please order separately.  
● Includes "O" Ring, item 8.

**Binks Manufacturing Company, 1983  
All Rights Reserved**

Revision: Redrawn view of regulators.

Printed in USA 4/87